

# INTRODUCING TalentED

GEO-ENABLING THE  
STUDENT JOURNEY

[talentedcareerpathways.org](http://talentedcareerpathways.org)

The California Community Colleges Vision for Success underscores the need for innovative tools and partnerships that demonstrate how community colleges impact students' lives and add value as an engine of economic mobility. TalentED is a geo-enabled career navigation hub that provides actionable workforce data, mapping and visualization capabilities that empower students to find programs, enter a pathway, and reach their career goals. A regional collaboration of Orange County community colleges and business partners, TalentED story maps feature priority industry sectors and high skill, high demand jobs.

PRIORITY INDUSTRY SECTORS

Advanced  
Transportation



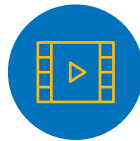
Biotechnology



Business &  
Entrepreneurship



Digital Media Arts



Energy, Construction  
& Utilities



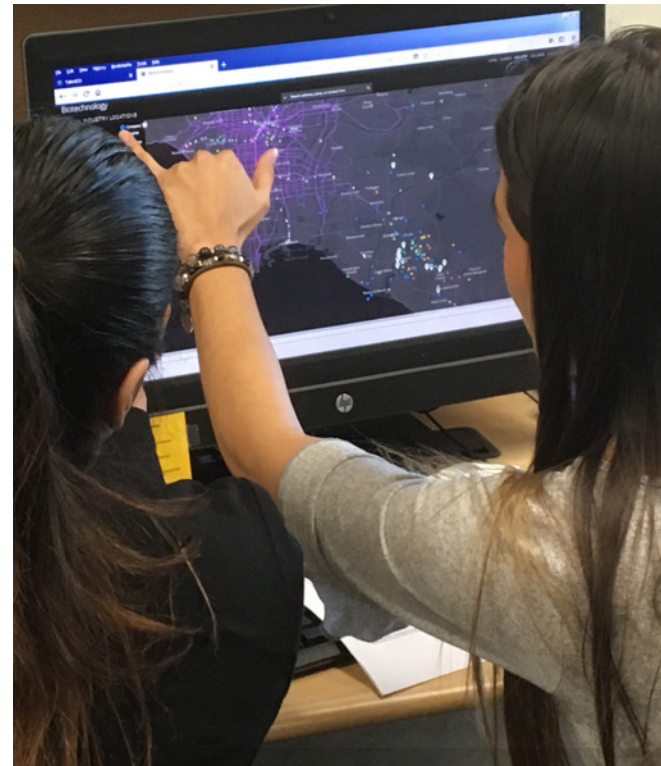
Nursing &  
Allied Health



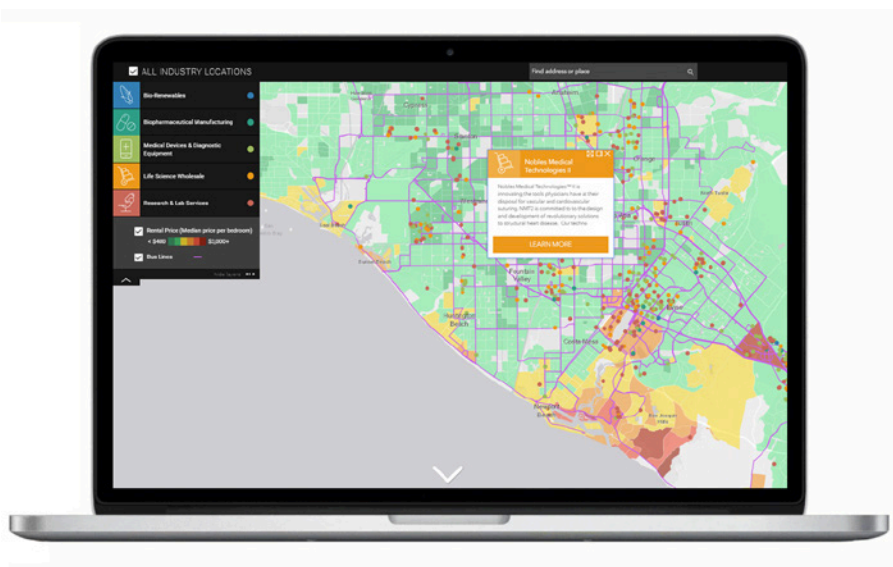
ICT



Retail, Hospitality  
& Tourism



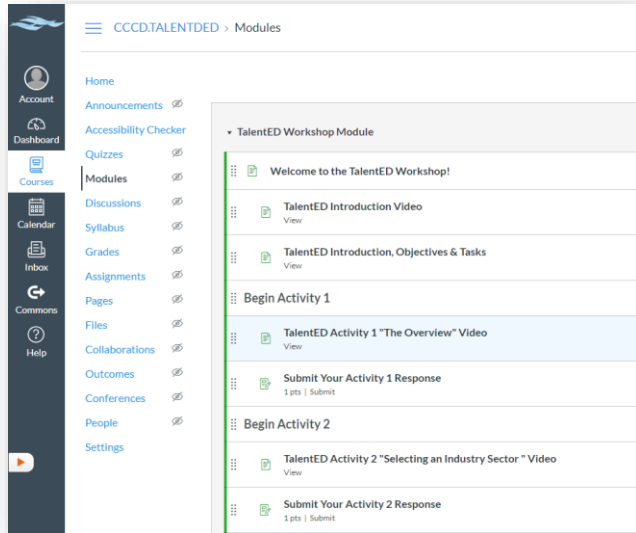
By harnessing the power of GIS technology, TalentED story maps take career exploration to a new level.



## What are story maps?

Story maps combine interactive maps with text, images and multimedia content. They make it easy to use the power of maps and location to help students navigate their journey from education to the workforce.

## An introduction to TalentED course module is available for immediate use through CANVAS.



canvas

The TalentED Canvas module consists of 7 activities that include closed captioned video instruction for each activity accompanied by Canvas assignment prompts for student responses that can be recorded for grading.

## 5 simple steps to immediately incorporate TalentED as a supplement to your on-line learning activities .

1

In Global Navigation, (click the **Commons** link.

2

In the search field, type “**TalentED Workshop Module**”

3

Click the **resource title**

4

To import the module into your course, click the **Import/Download** button.

5

Then, click the **Import into Course** button

